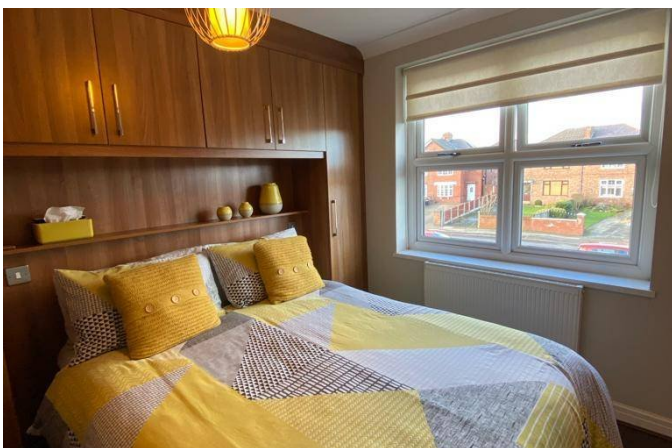


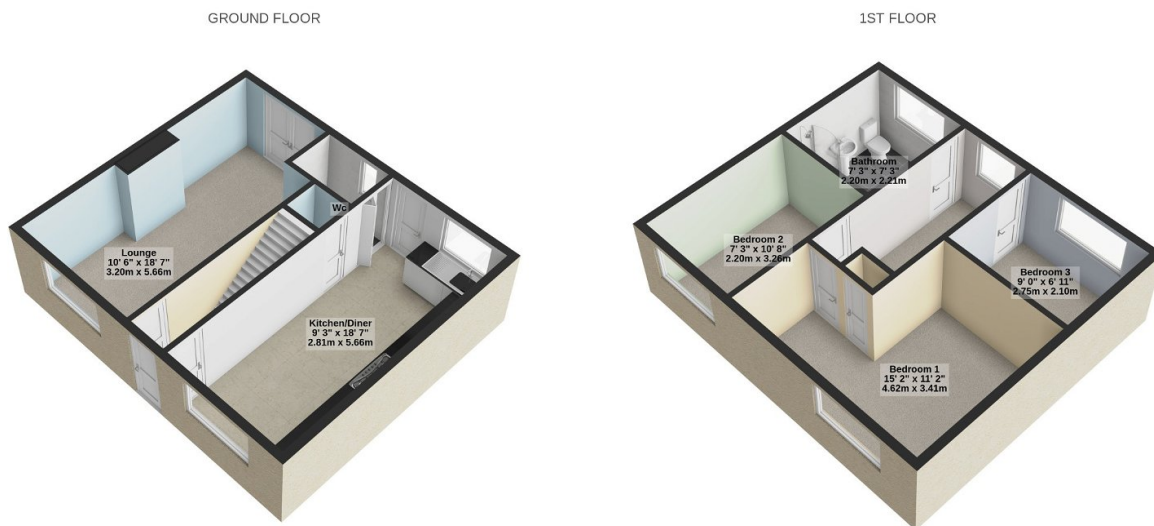
71 Park Lane

£220,000

3 1 1



- Stunning turn key DREAM home
- Newley renovated kitchen
- Family bathroom and downstairs WC
- Sought after location
- Semi Detached
- Amtico flooring downstairs
- Off road parking on Driveway
- Landscaped back garden
- 3 bedrooms
- Fitted wardrobes in bedrooms



PARK LANE, BOOTLE
 TOTAL FLOOR AREA : 840 sq.ft. (78.0 sq.m.) approx.

For illustrative purposes only. Decorative finishes, fixtures, fittings and furnishings do not represent the current state of the property. Measurements are approximate. Not to scale.
 Made with Metropix © 2024

WOW! Are you looking for the perfect home? We think we may have found it!