
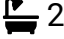



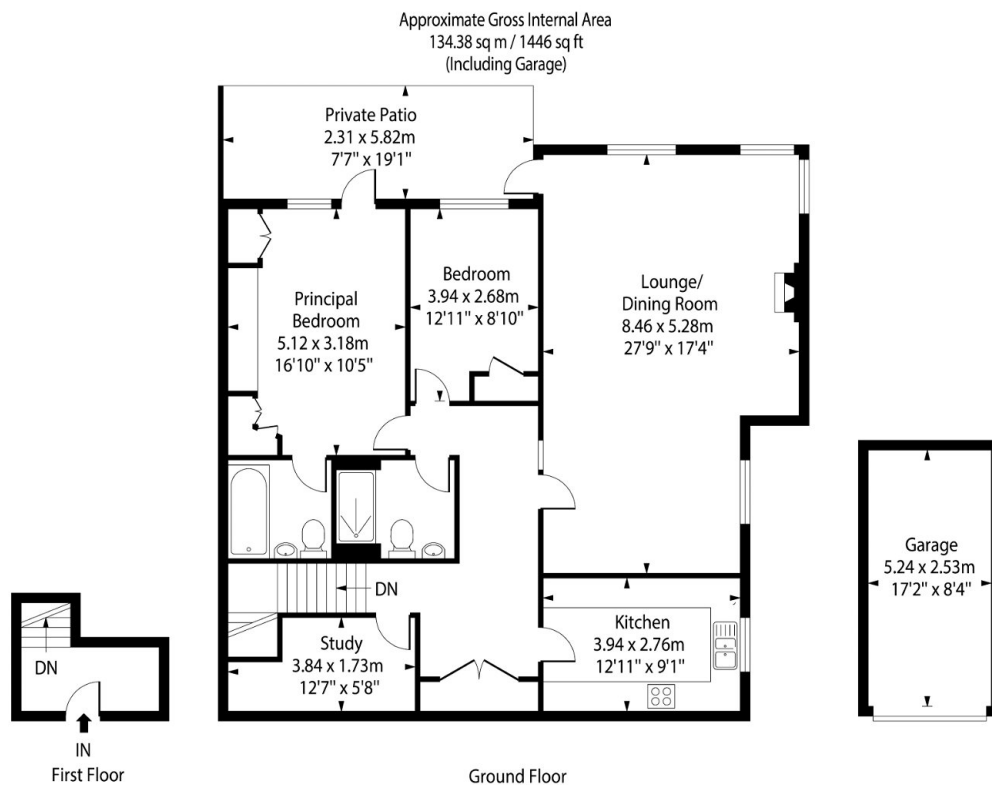
## St. Mary's Mount, Caterham, CR3 6SJ

Offers Over £400,000

 2  2  1



- Walking distance to Caterham and Caterham-on-the-Hill
- Panoramic views onto woodland grounds and countryside views over Caterham.
- Large, triple-aspect open plan living/dining room
- Communal tennis court and gardens
- Lots of storage
- No onward chain
- Direct access onto private patio off living room and master bedroom
- One level living, approx 1446 Sq Ft including garage
- Renovated with contemporary, bright interior
- Garage with parking space in front. Visitors parking.



Not to scale, for guidance only and must not be relied upon as a statement of fact. All measurements and areas are approximate only and have been prepared in accordance with the current edition of the RICS Code of Measuring Practice.

Nestled within a serene setting and tucked away in the corner of this peaceful development, this two double bedroom maisonette (with additional study) has been renovated to provide bright, contemporary accommodation. Woodland and countryside views from all living areas and master bedroom, offering natural light and tranquility. An unusually large kitchen with picture window with views. The covered stone patio off the lounge and master bedroom allows you to enjoy the communal gardens in this peaceful setting. Perfectly positioned within walking

distance of Caterham and Caterham on the Hill, for train station and shops, as well as Queens Park. \*Approx: 1446 Sq Ft including garage