



Westhope, Herefordshire

Guide Price £1,000,000

🛏️ 4 🚗 3 🛋️ 3



A Magnificent Extended 4 Double Bedroom Contemporary Family Home, basking in breathtaking panoramic views in an elevated hillside position at Westhope, Herefordshire.

Open Plan Kitchen/Breakfast/Family Room – Sitting Room – Dining Room – Cloakroom – Utility Room – 2 Ensuite Double Bedrooms with Built-in Wardrobe – Further Double Bedroom with Built-in Wardrobe – Family Bathroom First Floor Double Bedroom – Large Attic – Garage (420 sq.ft) – Tiered Gardens with Panoramic Elevated Views – Approx. 1.5 Acre Paddock – Driveway

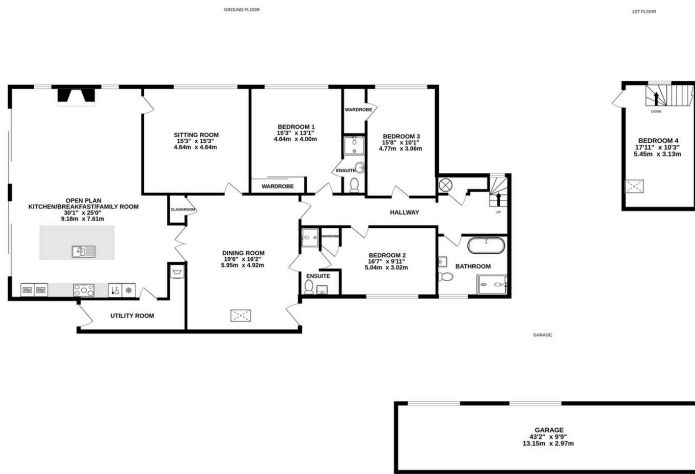
Boasting an enviable south-west facing position in Westhope, the property offers unparalleled views across beautiful Herefordshire to the Welsh mountains, all while enjoying complete privacy within the house itself, which has been vastly extended from the original cottage and completely renovated and modernised to an ultra-high standard. Upgrades include 'Herschel' infrared heating panels throughout, 'Energie' thermodynamic solar hot water system, 'Schuco' argon filled double glazed windows, 'Pilkington Suncool' solar glass sliding doors, 'Woodfire' inset woodburner, 'Thermabead' carbon saver cavity wall insulation, 'Masterclass' kitchen with built-in Samsung & Hotpoint appliances, photovoltaic roof solar panels and much more, all creating an impressive, forward thinking and highly energy efficient modern home.

Nestled in the scenic Herefordshire countryside, Westhope offers a tranquil rural setting with picturesque views and a close-knit village community. Surrounded by rolling hills and farmland, the area enjoys a peaceful atmosphere while maintaining convenient access to Hereford, just a short drive away, with its range of shops, restaurants, and cultural attractions. The location benefits from excellent travel connections, including the A49 and nearby train stations, offering easy links to Worcester, Birmingham, and beyond.

The Property

Dining Room: 'Alu-tec' aluminium front door opens into the property, where a spacious 5m x 6m dining room greets, including floor tiles with ProWarm tile back 10mm insulation. built-in cloakroom for





TOTAL FLOOR AREA: 2729 sq.ft. (253.5 sq.m.) approx.

Whilst every attempt has been made to ensure the accuracy of the floorplan contained here, measurements of doors, windows, rooms and any other items are approximate and no responsibility is taken for any error, omission or mis-statement. This plan is for illustrative purposes only and should be used as such by any prospective purchaser. The services, systems and appliances shown have not been tested and no guarantee as to their operability or efficiency can be given.
Made with Metropix ©2024

- Stunning Contemporary Family Home
- Breathtaking Elevated Panoramic Views
- Advanced Infrared Panel Heating System
- Huge Garage with Conversion Potential
- Private Hillside Position
- 4 Double Bedrooms; 2 Ensuites
- High Spec Upgrades Throughout
- Luxury Family Bathroom
- Approx. 1.5 Acre Paddock
- Tiered Landscaped Gardens

