



Englands Field, Bodenham, Hereford, HR1 3JL

Guide Price £470,000

🛏️ 4 🚿 2 🚺 2



A Stylish & Spacious Detached 4 Double Bedroom Family Home, superbly presented throughout with detached double garage, all in the desirable village of Bodenham, Herefordshire.

Entrance Hall – Kitchen – Dining Room – Sitting Room – Utility Room – Downstairs WC – Under-Stairs Storage – Bedroom 1 With Ensuite – 3 Further Double Bedrooms – Family Bathroom – Airing Cupboard – Storage – Rear Garden – Double Garage – Driveway

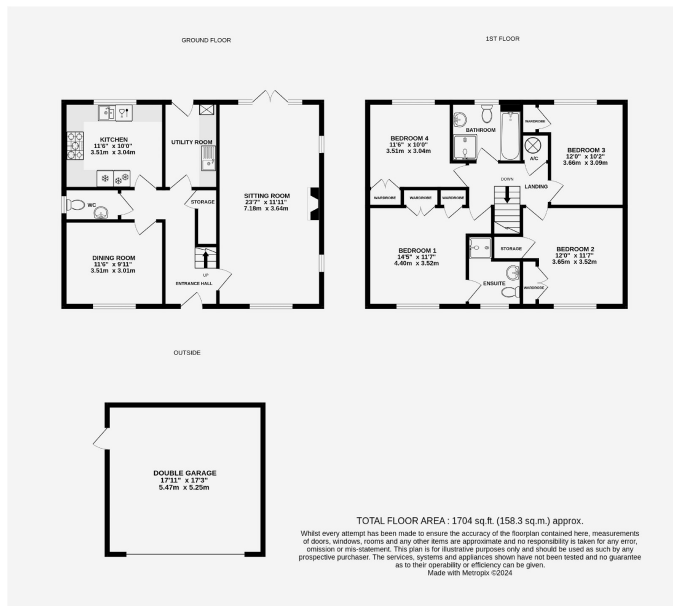
Featuring engineered oak flooring throughout much of the ground floor, a fully equipped kitchen with granite countertops, solid oak doors, Valspar décor and more, this contemporary yet characterful residence is impeccably finished to meet the needs of a growing family. Offering a private rear garden backing onto fields, detached double garage with power & lighting, spacious driveway, ensuite shower in the main bedroom suite and three additional double bedrooms, this property provides exceptional comfort and convenience.

Nestled on the outskirts of a lively village, Bodenham offers a wealth of amenities within close proximity. Just a brief walk away is a charming 16th-century pub, serene lakes, historic church, village shop, post office, GP surgery, Ofsted-rated "Good" primary school, and a bustling village hall hosting various clubs and activities. For the active residents, Bodenham also boasts tennis courts and a sailing club. For additional amenities, Hereford's City Centre is a mere 8 miles away, while the market town of Leominster is just under 7 miles distant.

The Property

Entrance Hall – Entering the central hall, engineered oak flooring underfoot leads to all ground floor rooms. To the left is the downstairs lavatory, equipped with a low flush WC, basin with chrome mixer tap and tile flooring. Under the stairs is a large closet, ideal for coats & shoes.





- Stunning High Spec Finish Throughout
- Detached Double Garage & Large Driveway
- Highly Desirable Village Location
- 4 Double Bedrooms; Detached
- Backing Onto Open Fields
- Integrated Neff & Rangemaster Appliances

