

## 17 Little Potters

Guide Price £1,195,000

5 3 4



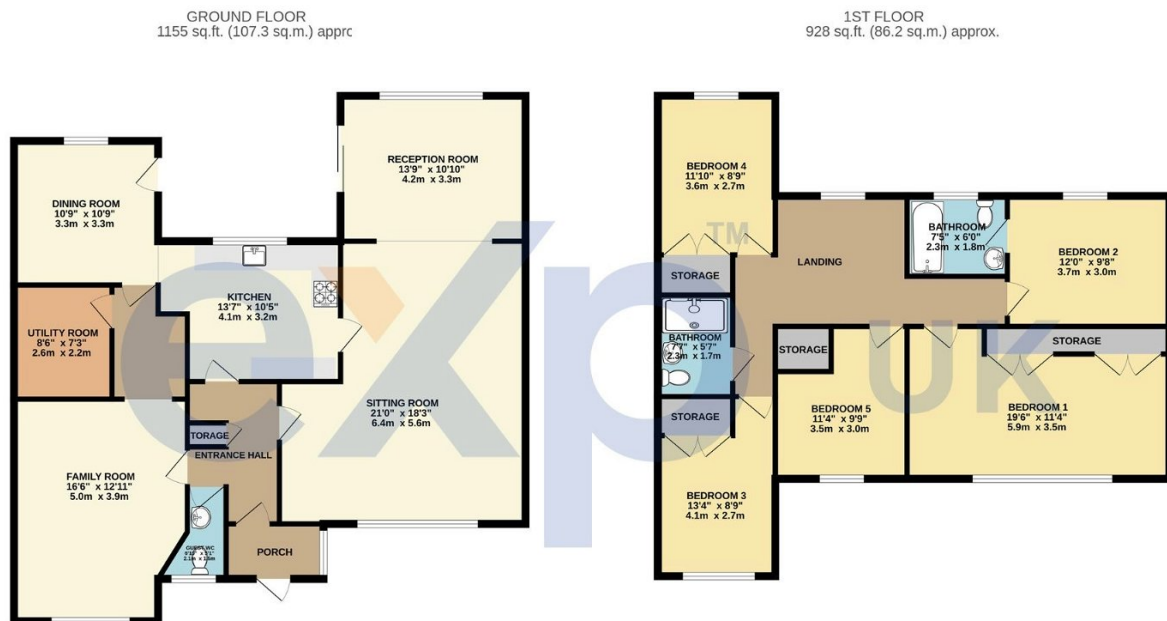
Ref: MS0129

This spacious family home in Bushey Heath offers five bedrooms, four reception rooms, and over 2,000 square feet (193 square meters) of internal living space. Having been cherished by the same family for nearly 30 years, it's now ready to welcome a new family.

Situated just off Little Bushey Lane, you are a short walk to the Heath, with local shopping, restaurants and deli's as well as Bushey Synagogue and other places of worship. King Georges Playing Fields is close by as well as good schools like Immanuel College, Bushey Heath Primary and Hartsbourne.

If you're seeking a comfortable and well-connected family home, this one in Bushey Heath might be the perfect fit!

- 5 Bedrooms
- Fitted Kitchen
- Utility Room
- 2083 SQ FT (193.5 SQM) Approx
- Close to Bushey Heath Amenities
- 4 Reception Rooms
- 2 First Floor Bathrooms + Guest WC
- Driveway Parking for Several Cars
- Family Orientated Location
- Good Local Schools & Infrastructure



TOTAL FLOOR AREA: 2083 sq.ft. (193.5 sq.m.) approx.

Whilst every attempt has been made to ensure the accuracy of the floorplan contained here, measurements of doors, windows, rooms and any other items are approximate and no responsibility is taken for any error, omission or mis-statement. This plan is for illustrative purposes only and should be used as such by any prospective purchaser. The services, systems and appliances shown have not been tested and no guarantee as to their operability or efficiency can be given.  
Made with Metropix 62024