

Claudius Close, Stanmore, HA7 4PS

Guide Price £1,375,000

6 3 2



Ref: MS0129

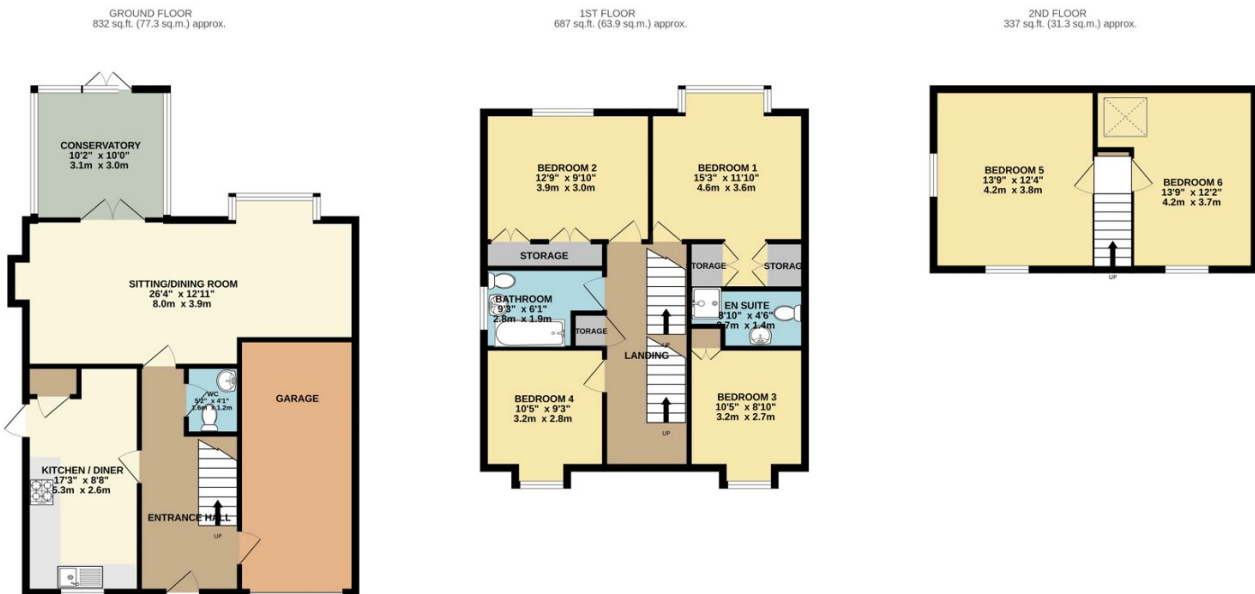
OPEN TO REASONABLE OFFERS.

A rare opportunity: A modern, 6 bedroom detached family home in a quiet cul-de-sac in highly sought after Brockley Park.

The picturesque private development offers the perfect balance of quiet country and connected community with its own park and direct access to acres of woodland, and is yet within walking distance of Stanmore Station, the Broadway and notable places of worship. It's only a 5-minute drive to some of the best schools in the country - North London Collegiate and Haberdashers'. The M1, A41, A1, and A5 are all within easy reach.

This property comes to the market presented to a high standard, ready for a new family to move straight in.

- 6 Bedrooms
- Modern Fitted Kitchen / Diner
- 3 Bathrooms
- Integral Garage
- Woodland & Park Close By
- Spacious Living Room
- Detached with 1850 SQ FT / 172.5 SQM
- Off Street Parking for 3 Cars
- Only 20 Years Old
- Stanmore Tube / Broadway



TOTAL FLOOR AREA: 1857 sq.ft. (172.5 sq.m.) approx.

Whilst every attempt has been made to ensure the accuracy of the floorplan contained here, measurements of doors, windows, rooms and any other items are approximate and no responsibility is taken for any error, omission or mis-statement. This plan is for illustrative purposes only and should be used as such by any prospective purchaser. The services, systems and appliances shown have not been tested and no guarantee as to their operability or efficiency can be given.
Made with Metropix ©2023