



ADAM HALLIWELL POWERED BY **exp** TM UK

@ adam.halliwell@exp.uk.com

adamhalliwell.exp.uk.com

01242 906 586



St. Johns Close, Bishops Cleeve, Cheltenham, GL52

£475,000

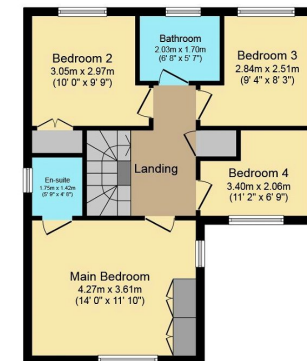
4 2 2





- Please quote ref AH0137
- Exclusive cul de sac location
- Garage
- Cloakroom and Utility Room
- En-suite shower room
- Four bedrooms
- Bryant Victoria design
- 70' x 32' (narrowing to 15') Rear garden
- Less than half a mile to the village
- Parking for three cars





Total floor area 117.6 sq.m. (1,266 sq.ft.) approx

This Floor Plan is for illustration purposes only and may not be representative of the property. The position and size of doors, windows and other features are approximate. Unauthorised reproduction prohibited. © PropertySOL

A Bryant built Victoria design home, part of the highly sought after "Willows" development, just a five minute (0.3 mile) walk to the village shops. Set in a generous plot that includes a 70' rear garden and located in a small close of just eight detached properties, this homes location and style are huge features. Accommodation also includes four bedrooms, master with ensuite, kitchen/breakfast room, lounge and dining room along with a downstairs cloakroom/WC. There is a garage and parking for three cars. Call now to arrange a viewing

Score	Energy rating	Current	Potential
92+	A		
81-91	B		84   B
69-80	C		
55-68	D	64   D	
39-54	E		
21-38	F		
1-20	G		