

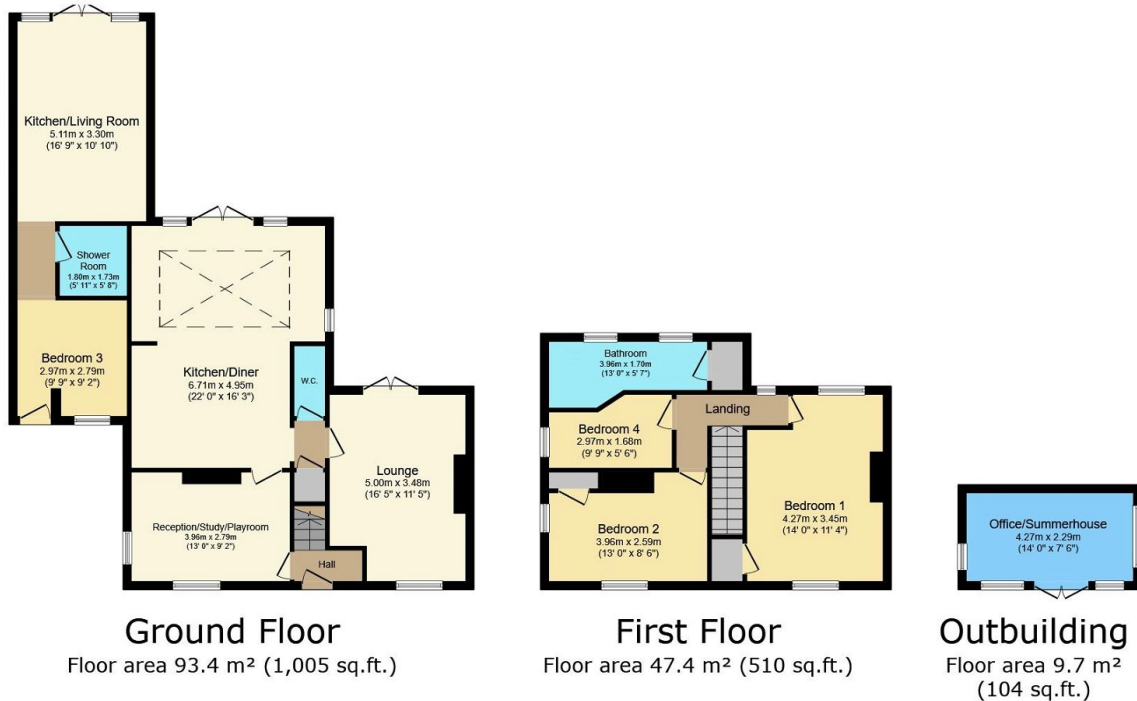
Broadway Road, Toddington, Cheltenham, GL54

£525,000

4 2 2



- Please quote ref AH0137
- One bedroom annexe
- 127' x 37' Westerly facing rear garden
- Lounge with open fire
- Stunning views front and rear over fields
- Three bedrooms
- Parking for five cars
- Gas fired Aga
- 14' x 7'6 Office/Summerhouse
- Downstairs cloakroom



TOTAL: 150.4 m² (1,619 sq.ft.)

This floor plan is for illustrative purposes only. It is not drawn to scale. Any measurements, floor areas (including any total floor area), openings and orientations are approximate. No details are guaranteed, they cannot be relied upon for any purpose and do not form any part of any agreement. No liability is taken for any error, omission or misstatement. A party must rely upon its own inspection(s). Powered by www.Propertybox.io

We present this country cottage in the village of Toddington. This three bedroom home was a stunning kitchen/diner, 127' x 37' rear garden with outdoor cabin, backing and facing fields. The rear bonus is the one bedroom ANNEXE on the side of the property opening up countless options for the occupants like rental, relatives (older or younger) or just guests. Contact the agent for more information.