



ADAM HALLIWELL POWERED BY exp TM UK

@ adam.halliwell@exp.uk.com

adamhalliwell.exp.uk.com

01242 906 586

Courtiers Drive, Bishops Cleeve, Cheltenham, GL52

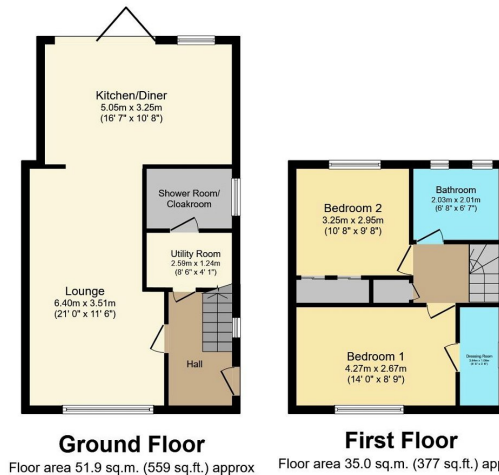
£325,000

🛏️ 2 🚿 2 🚗 1



- Please quote ref AH0137
- Two double bedrooms
- Amazing extended kitchen/ diner
- Ground floor shower/ cloakroom
- Master bedroom with dressing room
- Bathroom with shower
- 40' x 23' Garden
- Driveway
- Excellent presentation
- Double glazed and gas central heating





Total floor area 86.9 sq.m. (935 sq.ft.) approx
This Floor Plan is for illustration purposes only and may not be representative of the property. The position and size of doors, windows and other features are approximate. Unauthorised reproduction prohibited. © PropertyBOX

An extended two double bedroom home with ground floor shower room, dressing room off the master and landscaped rear garden. Parking to the front. Stunning kitchen with island and lantern roof. Call now for more details.

Score	Energy rating	Current	Potential
92+	A		
81-91	B		84 B
69-80	C	69 c	
55-68	D		
39-54	E		
21-38	F		
1-20	G		