

Cleeve Hill, Cheltenham, GL52

£400,000

🛏 2 🚗 1 🚗 2

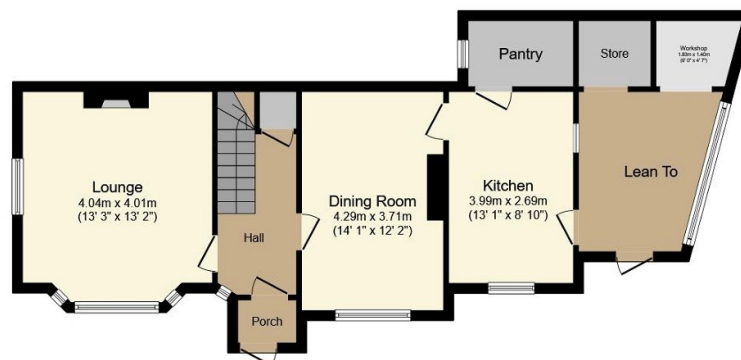


This stunning detached property on Cleeve Hill in the Cotswolds offers breathtaking views of Cheltenham and beyond, with spacious rooms, character features, and a well-maintained garden perfect for nature lovers. Two double bedrooms, two receptions, refitted shower room and parking.

AGENTS NOTE: The property is timber framed with a mixture of timber and render cladding. It's non standard construction means it has a very limited pool of lenders that may consider it suitable. Cash buyers would not be limited by this of course.

Key Features

- Please quote ref AH0137
- Two bedrooms
- Parking
- Timber framed (see agents note)
- High ceilings
- Stunning detached property with breathtaking views
- Two Receptions
- Refitted upstairs shower room
- Access onto the hill
- Large windows flood the space with natural light



Ground Floor



First Floor

Total floor area 114.8 m² (1,236 sq.ft.) approx

This plan is for illustration purposes only and may not be representative of the property. Plan not to scale. Powered by PropertyBox