



ADAM HALLIWELL POWERED BY **exp** TM UK

@ [adam.halliwell@exp.uk.com](mailto:adam.halliwell@exp.uk.com)

[adamhalliwell.exp.uk.com](https://adamhalliwell.exp.uk.com)

📞 01242 906 586

# 1 Mayfield Close, Bishops Cleeve

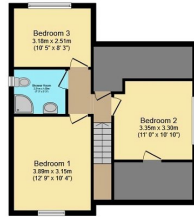
£450,000

3 1 2





**Ground Floor**



**First Floor**

Total floor area 121.4 sq.m. (1,307 sq.ft.) approx  
 This plan is for illustration purposes only and may not be representative of the property. Plan not to scale. Powered by PropertyBox



An individual three bedroom detached home, located down a private road of just five properties, less than 3/4 mile to the village of Bishops Cleeve. Offer with no onward chain the house has two receptions, three bedrooms, two bathrooms and a garage. Call now to arrange you accompanied viewing. Viewings start from 18th May onwards.

Score	Energy rating	Current	Potential
92+	A		
81-91	B		83   B
69-80	C		
55-68	D	62   D	
39-54	E		
21-38	F		
1-20	G		