



ADAM HALLIWELL POWERED BY **exp** TM UK

@ adam.halliwell@exp.uk.com

adamhalliwell.exp.uk.com

01242 906 586

Sumner Court, Quat Goose Lane, Swindon Village, Cheltenham, GL51

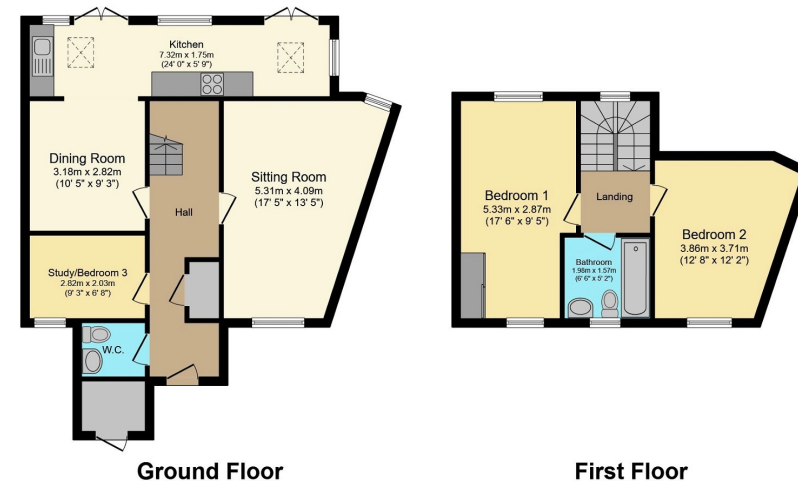
£360,000

3 1 1



- Please quote ref AH0137
- Open-plan kitchen with vaulted ceiling
- Village with Ofsted rated "good" school
- Fun childrens play area in bedroom two
- Upstairs bathroom
- Three bedrooms (one ground floor)
- Parking plus visitors spaces
- Flexible living arrangements
- Large front to back master bedroom with vaulted ceiling
- Downstairs cloakroom/WC





Total floor area 99.4 sq.m. (1,070 sq.ft.) approx
 This plan is for illustration purposes only and may not be representative of the property. Plan not to scale. Powered by PropertyBox

Immaculate terraced property with flexible living, high ceilings, and a wide garden in a quiet and private location near schools and green spaces. Three bedrooms overall with two large doubles upstairs with vaulted ceilings and one ground floor bedroom offering flexible living and options to work from home. Parking, along with visitors parking.

Score	Energy rating	Current	Potential
92+	A		
81-91	B		86 B
69-80	C	74 C	
55-68	D		
39-54	E		
21-38	F		
1-20	G		