

Your Logo



Kings Mews, Hexham, NE46 1BG

£150,000

🛏️ 2 🚿 2

****MODERN APARTMENT**TWO BEDROOMS**NO UPPER CHAIN**GARAGE**SHARED ROOF GARDEN**IMMACULATELY PRESENTED****

This modern second floor apartment, in a convenient location close to town centre and upgraded to a high standard is immaculately presented. It has the added benefit of gas central heating, new laminate flooring and carpets throughout and a single garage. The property has had a newly fitted modern kitchen and bathroom.

- MODERN APARTMENT
- NO UPPER CHAIN
- GARAGE & VISITOR PARKING
- TWO BEDROOMS
- TWO BATHROOMS
- CONVENIENT LOCATION

Your Logo




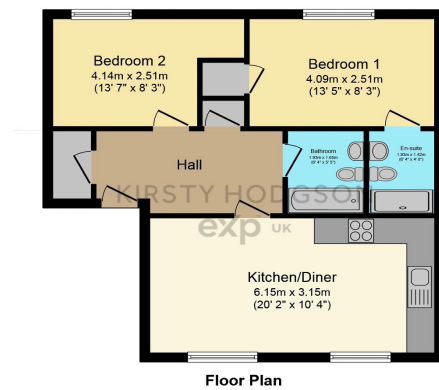
Floor Area: sq. ft.

Tenure: Leasehold

Service Charge: £0 per annum

Ground Rent: £ per annum

Energy Efficiency Rating		
	Current	Potential
Very energy efficient - lower running costs		
(92 plus) A		
(81-91) B		
(69-80) C	78	78
(55-68) D		
(39-54) E		
(21-38) F		
(1-20) G		
Not energy efficient - higher running costs		
England & Wales	EU Directive 2002/91/EC 	



This plan is for illustration purposes only and may not be representative of the property. Plan not to scale. Powered by PropertyBox